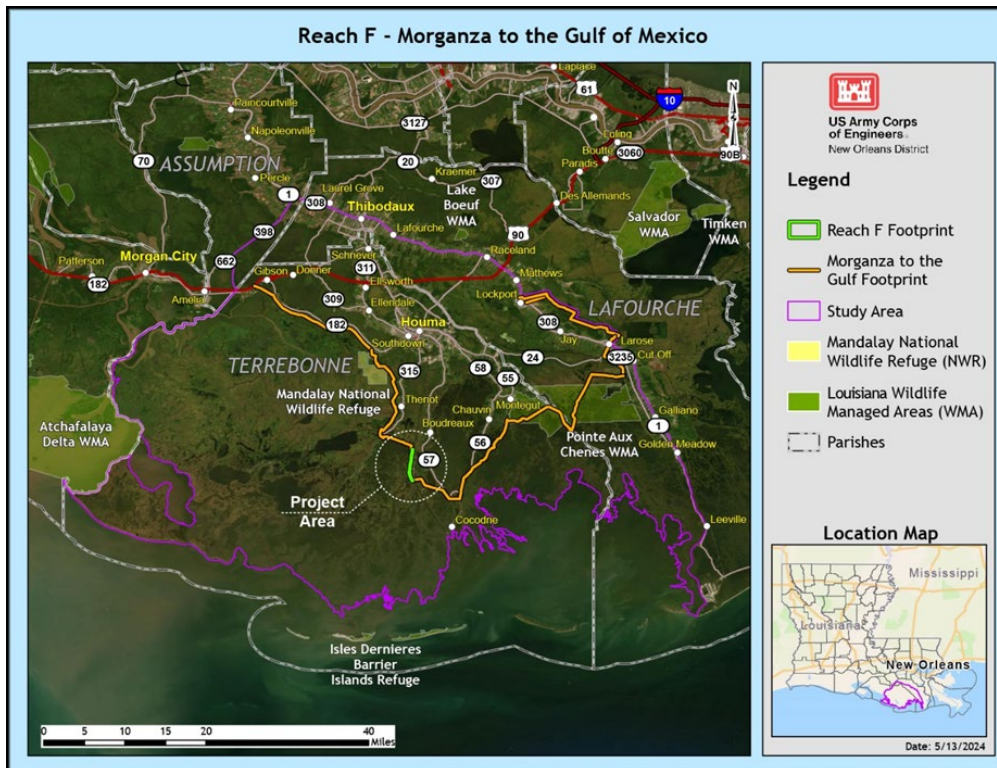




Reach F, Hurricane and Storm Risk Reduction Project Morganza to the Gulf, Terrebonne Parish, Louisiana



Appendix L: Prime and Unique Farmland

February 2026

The U.S. Department of Defense is committed to making its electronic and information technologies accessible to individuals with disabilities in accordance with Section 508 of the Rehabilitation Act (29 U.S.C. 794d), as amended in 1998. For persons with disabilities experiencing difficulties accessing content, please use the form @ <https://dodcio.defense.gov/DoDSection508/Section-508-Form/>. In this form, please indicate the nature of your accessibility issue/problem and your contact information so we can address your issue or question. For more information about Section 508, please visit the DoD Section 508 website. <https://dodcio.defense.gov/DoDSection508.aspx>.

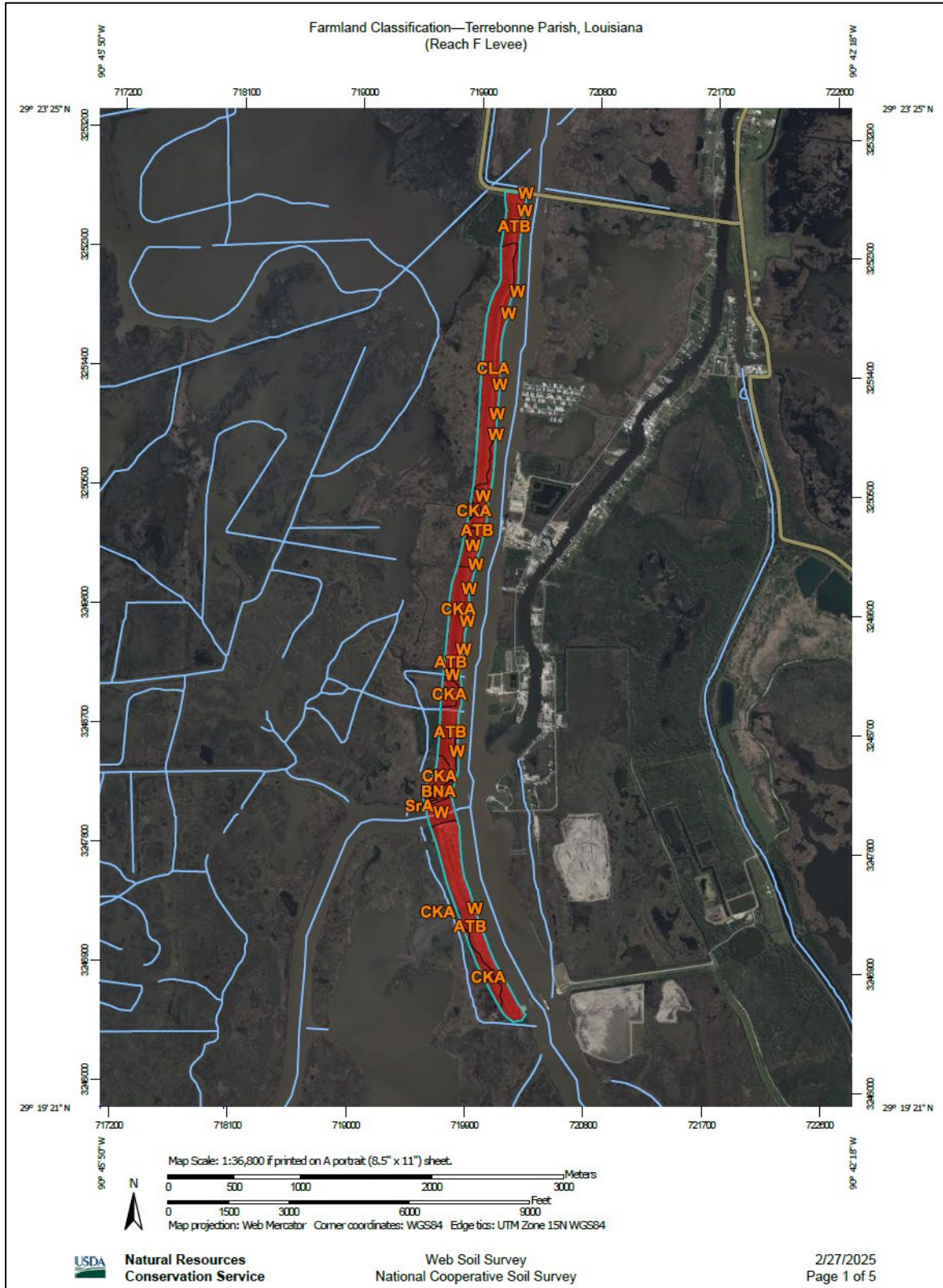


Figure 1. Map of the proposed Reach F levee alignment with soil types labeled.

Table 1. Soil types for the above Reach F levee alignment in acreages and percentage of the

Area of Interest (AOI).

Map unit symbol	Map unit name	Rating	Acres in AOI	Percent of AOI
ATB	Aquents, dredged, 1 to 5 percent slopes, occasionally flooded	Not prime farmland	103.5	44.3%
BNA	Bancker muck, slightly saline, tidal	Not prime farmland	3.4	1.4%
CKA	Clovelly muck, slightly saline, tidal	Not prime farmland	49.4	21.2%
CLA	Clovelly muck, very slightly saline, tidal	Not prime farmland	58.2	24.9%
SrA	Schriever clay, 0 to 1 percent slopes, occasionally flooded	Not prime farmland	2.4	1.0%
W	Water	Not prime farmland	16.5	7.1%
Totals for Area of Interest			233.5	100.0%

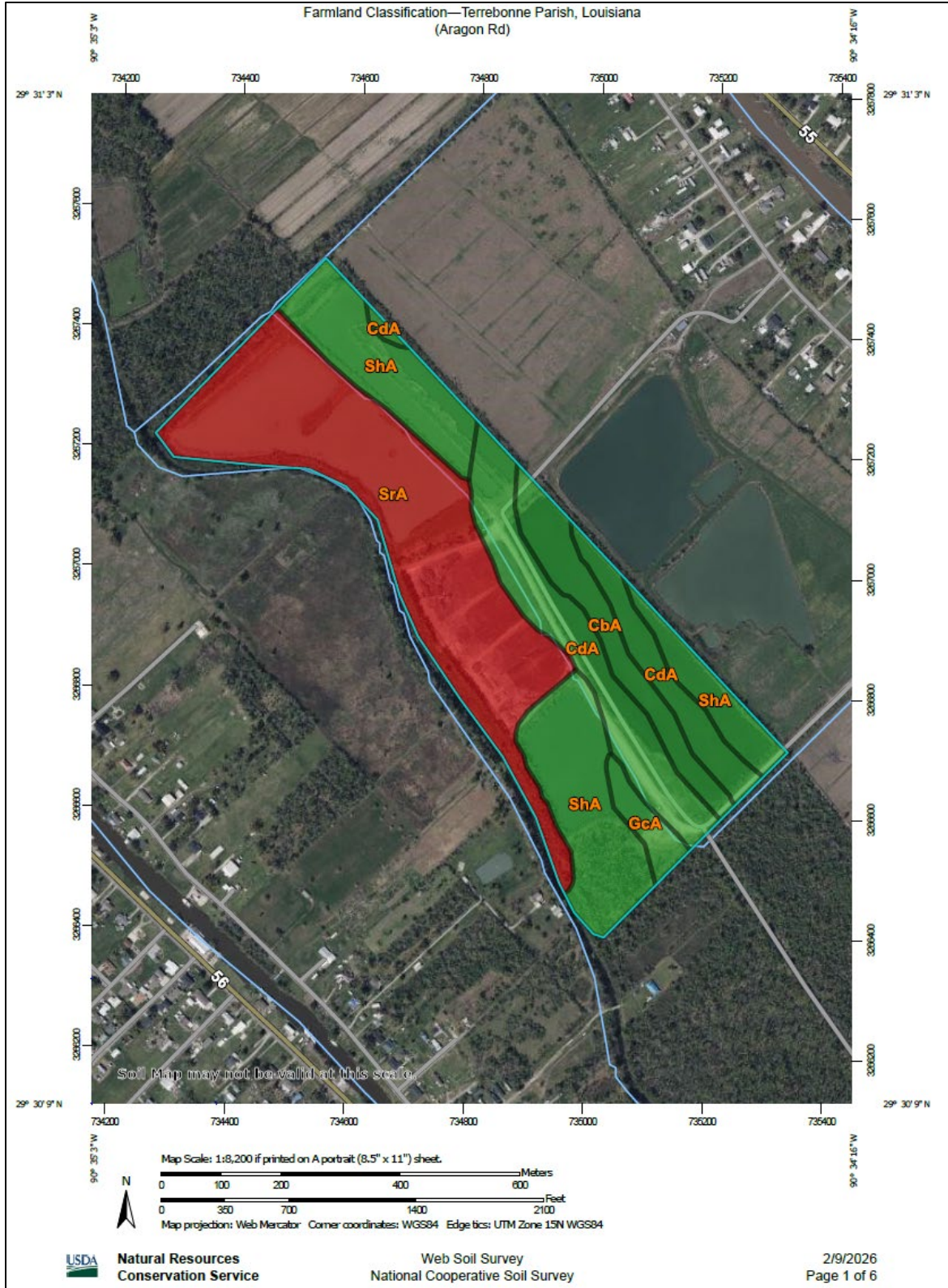


Figure 2. Potential borrow pit for Reach F levee construction, Aragon Rd. Located in Terrebonne Parish, Louisiana.

Table 2. Soil types for the above Aragon Rd borrow pit in acreages and percentage of the AOI.

Map unit symbol	Map unit name	Rating	Acres in AOI	Percent of AOI
CbA	Cancienne silt loam, 0 to 1 percent slopes	All areas are prime farmland	7.8	8.2%
CdA	Cancienne silty clay loam, 0 to 1 percent slopes	All areas are prime farmland	19.2	20.3%
GcA	Gramercy-Cancienne silty clay loams, 0 to 1 percent slopes	All areas are prime farmland	2.5	2.6%
ShA	Schriever clay, 0 to 1 percent slopes, rarely flooded	All areas are prime farmland	26.9	28.4%
SrA	Schriever clay, 0 to 1 percent slopes, occasionally flooded	Not prime farmland	38.3	40.4%
Totals for Area of Interest			94.7	100.0%



Figure 3. Potential borrow pit for Reach F levee construction, Saia Woodlawn Ranch. Located in Terrebonne Parish, Louisiana.

Table 3. Soil types for the above Saia Woodlawn Ranch borrow pit in acreages and percentage of the AOI.

Map unit symbol	Map unit name	Rating	Acres in AOI	Percent of AOI
CdA	Cancienne silty clay loam, 0 to 1 percent slopes	All areas are prime farmland	0.4	0.7%
GcA	Gramercy-Cancienne silty clay loams, 0 to 1 percent slopes	All areas are prime farmland	10.8	18.0%
ShA	Schriever clay, 0 to 1 percent slopes, rarely flooded	All areas are prime farmland	48.7	81.3%
Totals for Area of Interest			59.9	100.0%



Figure 4. Potential borrow pit for Reach F levee construction, Dularge East - 6. Located in Terrebonne Parish, Louisiana.

Table 4. Soil types for the above Dularge East - 6 borrow pit in acreages and percentage of the AOI.

Map unit symbol	Map unit name	Rating	Acres in AOI	Percent of AOI
CdA	Cancienne silty clay loam, 0 to 1 percent slopes	All areas are prime farmland	27.7	79.9%
ShA	Schriever clay, 0 to 1 percent slopes, rarely flooded	All areas are prime farmland	5.1	14.6%
SrA	Schriever clay, 0 to 1 percent slopes, occasionally flooded	Not prime farmland	1.9	5.5%
Totals for Area of Interest			34.7	100.0%



Figure 5. Potential borrow pit for Reach F levee construction, NFS A-1. Located in Terrebonne Parish, Louisiana.

Table 5. Soil types for the above NFS A -1 borrow pit in acreages and percentage of the AOI.

Map unit symbol	Map unit name	Rating	Acres in AOI	Percent of AOI
CbA	Cancienne silt loam, 0 to 1 percent slopes	All areas are prime farmland	44.4	50.7%
CdA	Cancienne silty clay loam, 0 to 1 percent slopes	All areas are prime farmland	33.9	38.7%
ShA	Schriever clay, 0 to 1 percent slopes, rarely flooded	All areas are prime farmland	9.3	10.6%
Totals for Area of Interest			87.5	100.0%